

Bass Pro Shops

Bass Pro Shops, Dieppe, NB

Address ([Map](#)): 499 Paul Street, Dieppe, New Brunswick E1A6S5 Canada
 Sector: Retail
 MCW Office: Moncton

Status: Complete



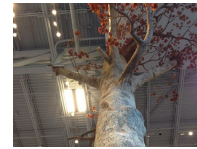
Mechanical:
MCW Maricor

Electrical:
MCW Maricor

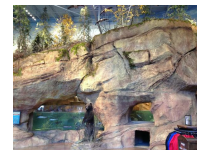


Architect:
Anderson Architect Ltd.

Structural:
Valron Engineers Inc.



Contractor:
Acadian Construction (1991) Ltd.



Project Description

Only the fourth Canadian location, the 110,000 square-foot Bass Pro Shops Outdoor World store is a retail destination drawing from more than 1.2 million people living within a three-hour drive. The location is the former Crystal Palace, a multi-use facility comprising of a movie theatre, Chapters, hotel, restaurant, convention centre and indoor amusement park, originally designed by MCW staff in the early 1990's.

The movie theatre and Chapters remain, and the remainder of the facility was gutted and transformed into Bass Pro Shops. The Maritimes provinces enjoy a rich tradition of outdoor sports and history. With 11,000 kilometres of saltwater coastline, 250 rivers, 6,500-plus lakes and more than 10,000 kilometres of trails, the area offers world famous fishing and hunting. Some of the best anglers head to Canada to fish everything from salmon to shark; from brook trout to small mouth bass. Trophy black bear, moose, white-tailed deer and waterfowl can be found in the area's pristine forests, secluded marshes and coastal woods.

Bass Pro Shops are known for combining retail with entertainment, conservation and outdoor education. Unique exterior and interior motifs of Bass Pro Shopshave branded them as visually appealing, high quality outdoor stores. The outdoors feel is brought indoors through massive log and rock work, large indoor aquariums and water features stocked with native fish species as well as an extensive collection of museum quality fish and wildlife mounts. Historic photos and exhibits will pay tribute to the regions great outdoor heritage.

Mechanical Systems Description:

Mechanical Design Includes:

Gas Fired Roof-top Units

Electrical Systems Description:

Electrical Design Includes:

LED Lighting

Electrical Panels hidden inside man-made tree trunks